



# Defense Acquisition Workforce Key Information

OVERALL

As of FY15Q2 (31 March 2015)



# AWF Fact Sheet – FY08 FY14



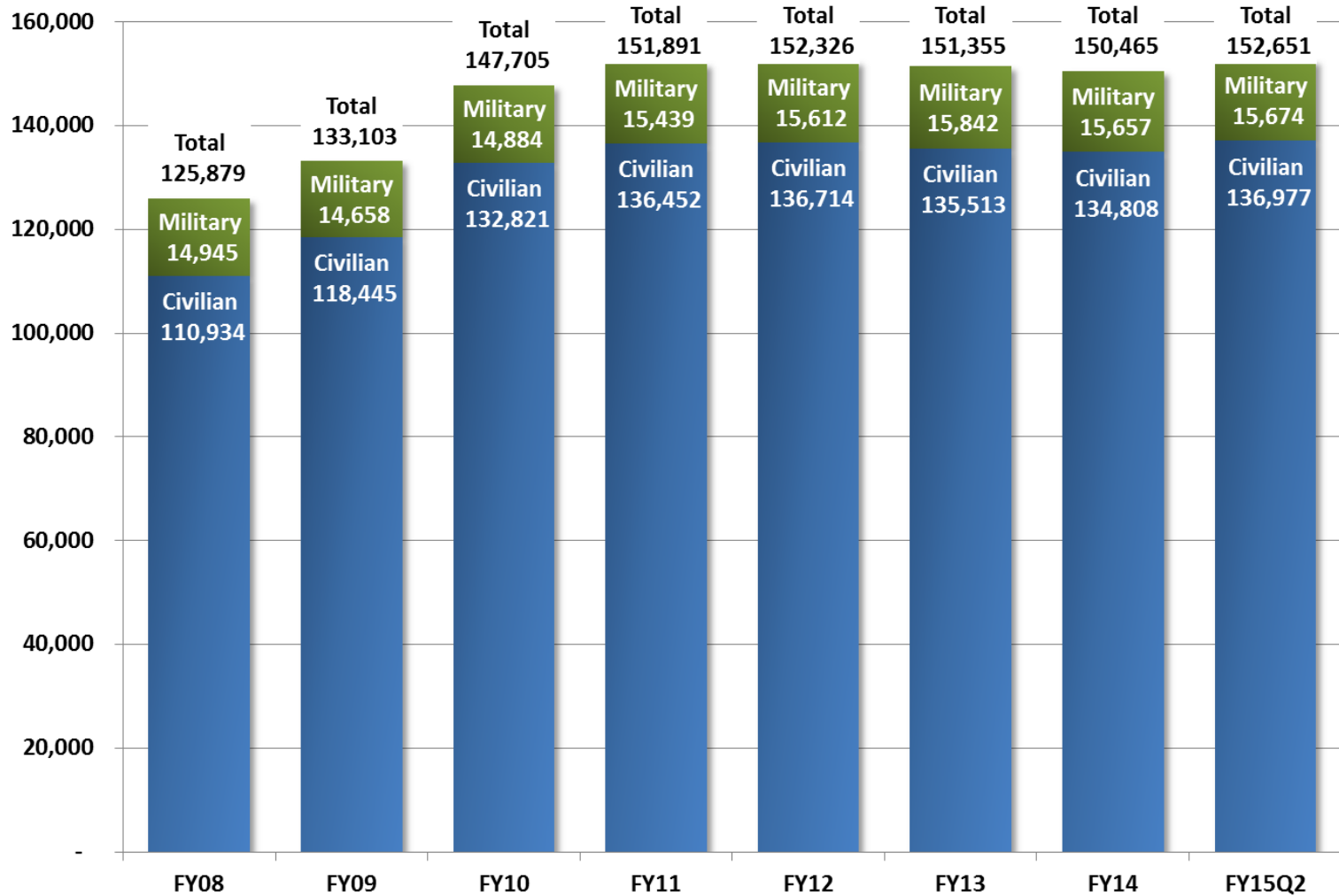
Human Capital Fact Sheet (FY 2014)						
Defense Acquisition Workforce AT&L	FY 2008			FY 2014		
	AT&L Civilian (Civ)	AT&L Military (Mil)	Total AT&L (Civ+Mil)	AT&L Civilian (Civ)	AT&L Military (Mil)	Total AT&L (Civ+Mil)
<b>Size &amp; Composition</b>						
Workforce Size	110,934	14,945	125,879	134,808	15,657	150,465
Change in size from 2008	-	-	-	22%	5%	20%
Civilian/Military Composition	88%	12%	-	90%	10%	-
<b>Educational Attainment</b>						
Bachelor's Degree or Higher	77%	81%	77%	83%	82%	83%
Graduate Degree	26%	44%	29%	36%	53%	38%
<b>Certification (Cert)</b>						
Level I or Higher Achieved	73%	61%	72%	89%	73%	88%
Level II or Higher Achieved	63%	41%	61%	80%	50%	77%
Level III Achieved	38%	19%	36%	47%	24%	45%
Position Cert Rqmt Met or Exceeded	61%	41%	58%	81%	57%	79%
Within 24 Months of Cert Rqmt	25%	46%	27%	15%	38%	17%
Does Not Meet Cert Rqmt	15%	12%	14%	4%	6%	4%
<b>Planning Considerations</b>						
% Baby Boomer / Traditional Gen.	68%	17%	62%	47%	3%	42%
Average Age	46.9	36.4	45.7	46.1	35.4	45.0
Workforce Life-Cycle Model (YRE) % Future/Mid-Career/Senior	20/23/57(%)	-	-	25/23/52(%)	-	-
Average Years of Service	17.8	13.3	17.3	15.6	13.0	15.3
Retirement Eligible	19,051(17%)	-	-	22,435(17%)	-	-
Retirement Eligible w/i 5 Years	21,315(19%)	-	-	25,741(19%)	-	-
Total Gains/Losses	14,245/15,030	-	-	10,194/11,475	-	-

Source: The Human Capital Fact Sheet is based on end of FY2008 and end of FY2014 data and was generated by OUSD(AT&L)/Human Capital Initiatives using the AT&L Workforce Data Mart.

\*Analysis support from RAND using FY2008 and FY2014 DMDC data.



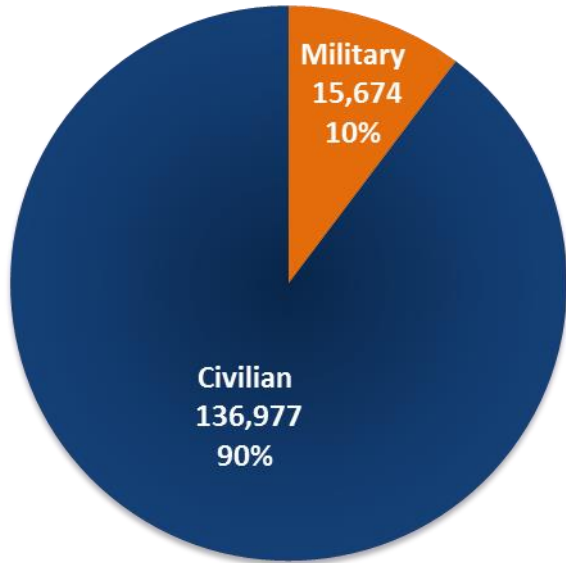
# AWF – Historical Workforce Size FY08 – FY15Q2





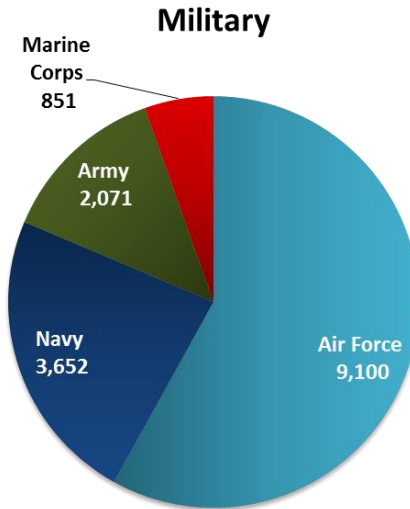
# AWF – Military and Civilian By Component and Career Field

## OVERALL

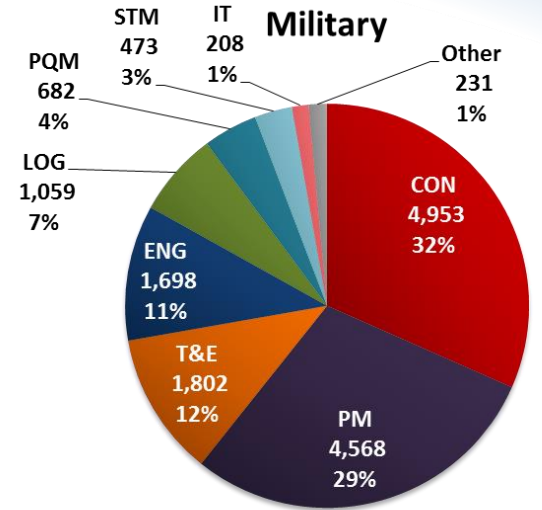


AWF Total

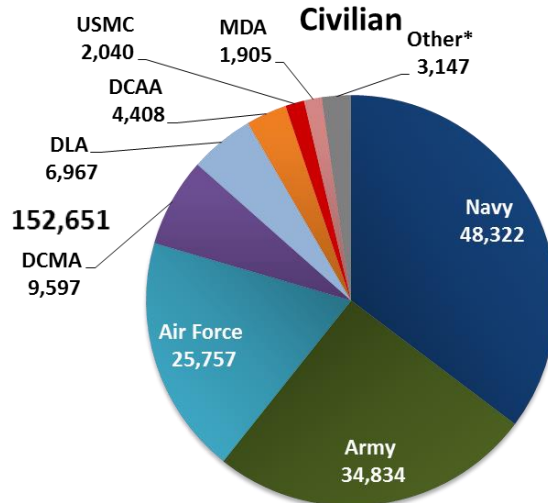
152,651



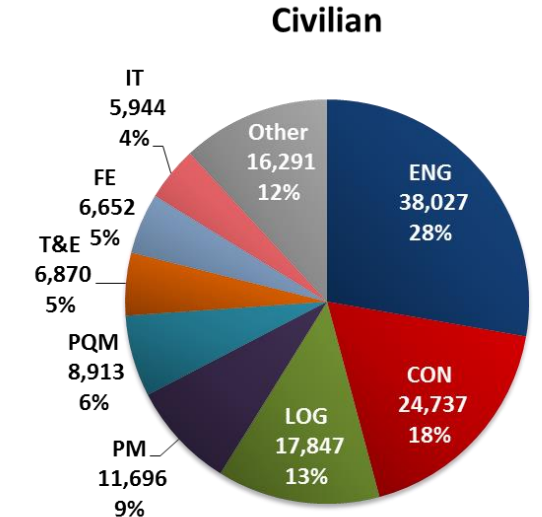
Military AWF Total 15,674



Military Total 15,674



\* - Other 2% (21 different 4th Estate Agencies) Civilian AWF Total 136,977



Civilian Total 136,977

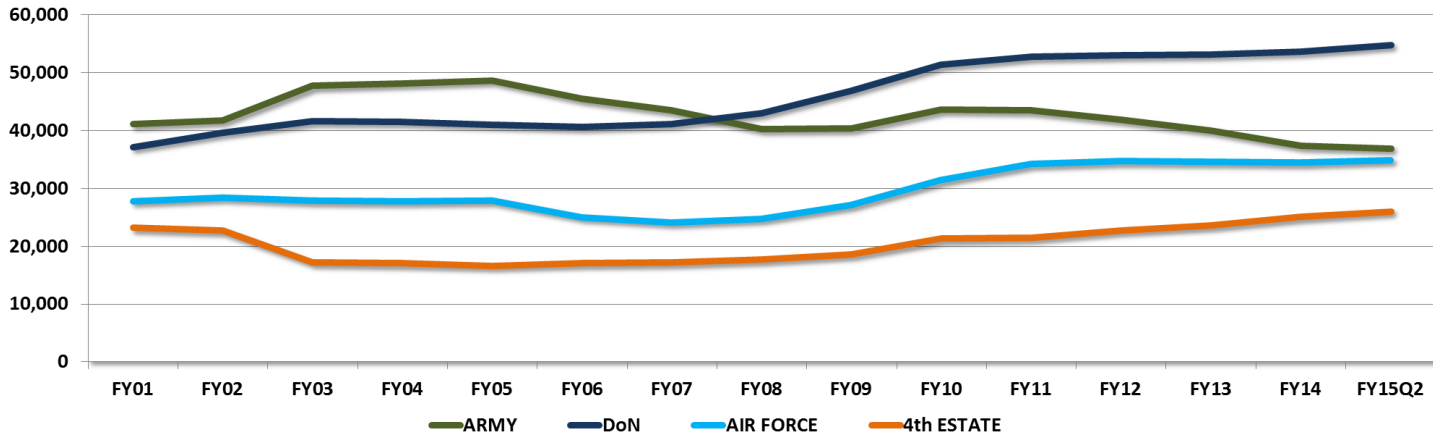


# AWF Size by Component and Career Field

AWF Count by Career Category FY15Q2	Army	DoN	Air Force	4th Estate	Totals	% Total
Auditing	-	-	-	4,399	4,399	2.9%
Business - CE	245	559	445	75	1,324	0.9%
Business - FM	1,659	1,938	1,879	620	6,096	4.0%
Contracting	8,093	5,732	8,419	7,446	29,690	19.4%
Engineering	8,899	20,172	8,675	1,979	39,725	26.0%
Facilities Engineering	1,559	5,014	19	62	6,654	4.4%
Information Technology	1,703	2,568	1,094	787	6,152	4.0%
Life Cycle Logistics	7,361	5,883	2,945	2,717	18,906	12.4%
Production, Quality and Man	1,404	2,655	327	5,209	9,595	6.3%
Program Management	3,305	6,168	5,246	1,545	16,264	10.7%
Property	48	59	19	258	384	0.3%
Purchasing	235	465	79	389	1,168	0.8%
S&T Manager	369	456	2,608	127	3,560	2.3%
Test and Evaluation	2,014	3,193	3,074	391	8,672	5.7%
Unknown/Other	11	3	28	20	62	0.04%
<b>FY15Q2 Totals (as of 03-31-2015 )</b>	<b>36,905</b>	<b>54,865</b>	<b>34,857</b>	<b>26,024</b>	<b>152,651</b>	
<b>Component %</b>	<b>24.2%</b>	<b>35.9%</b>	<b>22.8%</b>	<b>17.0%</b>		



# AWF Historical Size Detail by Component



Overall Defense Acq Workforce Service	FY01	FY02	FY03	FY04	FY05	FY06	FY07	FY08	FY09	FY10	FY11	FY12	FY13	FY14	FY15Q2
<b>ARMY</b>	41,074	41,783	47,697	48,188	48,697	45,443	43,473	40,269	40,356	43,634	43,476	41,877	40,037	37,342	36,905
<b>DoN</b>	37,158	39,661	41,622	41,552	41,070	40,651	41,177	43,066	46,972	51,418	52,791	53,058	53,214	53,685	54,865
<b>AIR FORCE</b>	27,820	28,444	27,888	27,775	27,932	25,075	24,172	24,827	27,174	31,382	34,147	34,637	34,534	34,395	34,857
<b>4th ESTATE</b>	23,197	22,705	17,224	17,024	16,671	17,073	17,210	17,717	18,601	21,271	21,477	22,754	23,570	25,043	26,024
<b>OVERALL DAW</b>	129,249	132,593	134,431	134,539	134,370	128,242	126,032	125,879	133,103	147,705	151,891	152,326	151,355	150,465	152,651

% Change Since FY01	% Change Since FY05	% Change Since FY08
-10%	-24%	-8%
48%	34%	27%
25%	25%	40%
12%	56%	47%
↑	↑	↑
18.1%	13.6%	21.3%



# AWF Historical Size Detail by Career Field



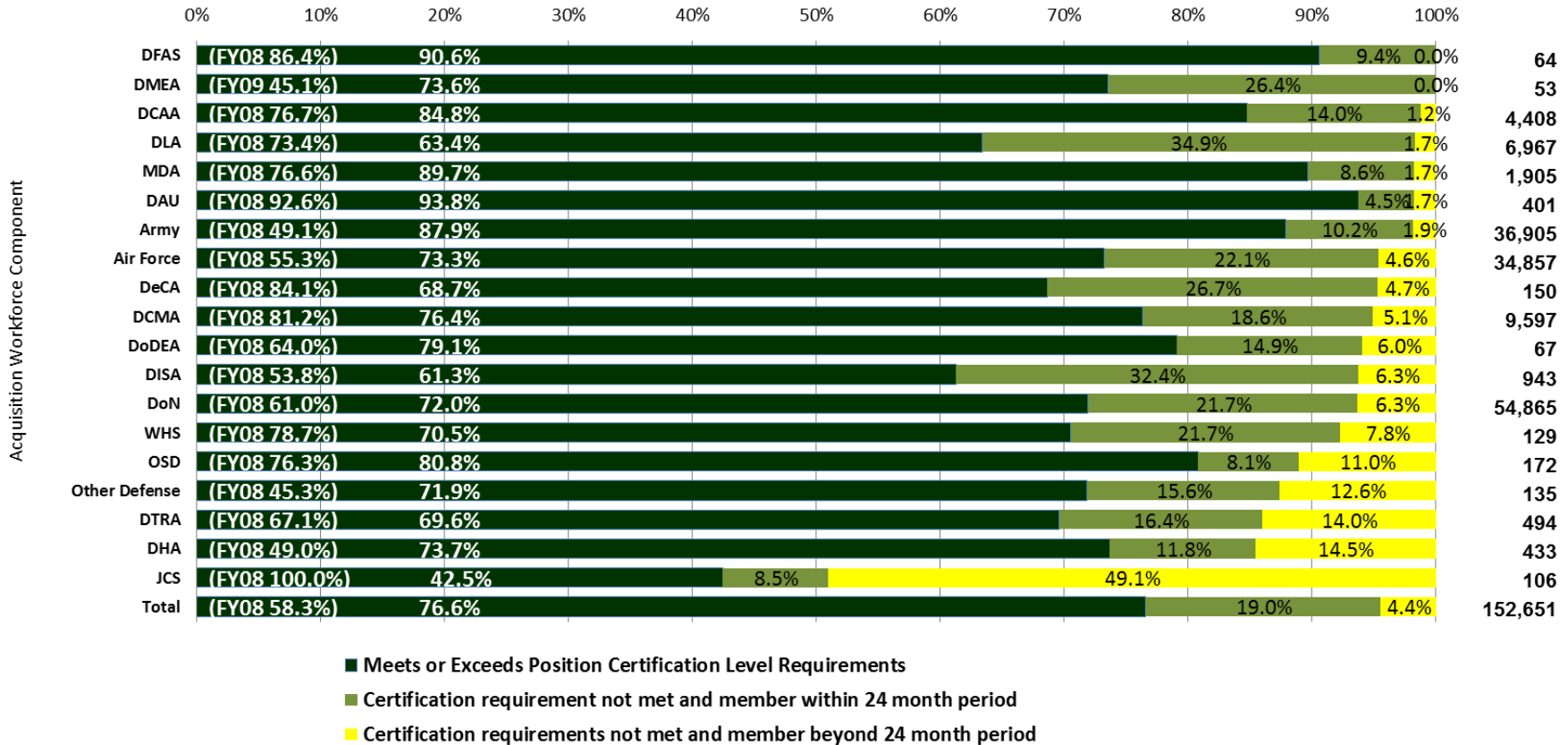
Overall Defense Acq Workforce Career Field	FY01	FY02	FY03	FY04	FY05	FY06	FY07	FY08	FY09	FY10	FY11	FY12	FY13	FY14	FY15Q2	% Change Since FY01	% Change Since FY05	% Change Since FY08
Engineering	33,812	33,462	33,142	34,597	34,752	35,142	34,710	34,537	36,704	39,201	39,690	39,807	39,544	39,242	39,725	17%	14%	15%
Contracting	19,196	21,563	21,179	20,966	26,025	27,748	26,038	25,680	27,655	29,792	30,327	30,292	30,271	29,826	29,690	55%	14%	16%
Life Cycle Logistics	9,880	9,951	11,622	11,045	12,493	12,332	12,604	13,361	14,852	16,861	17,369	17,539	17,122	17,724	18,906	91%	51%	42%
Program Management	12,387	12,412	11,425	12,746	12,284	12,775	12,427	12,781	13,422	14,915	15,683	15,824	16,171	16,003	16,264	31%	32%	27%
Production, Quality and Man	4,942	5,129	4,883	4,866	9,397	8,966	8,364	9,138	9,023	9,727	9,601	9,458	9,658	9,671	9,595	94%	2%	5%
Test and Evaluation	5,071	6,145	6,548	7,112	7,384	7,280	7,419	7,420	7,892	8,446	8,573	8,603	8,580	8,569	8,672	71%	17%	17%
Business (Cost Est & Fin Mgt)	9,168	9,029	8,145	8,078	8,119	7,747	7,387	7,085	7,262	8,124	8,261	8,039	7,775	7,451	7,420	-19%	-9%	5%
Facilities Engineering (NEW)	-	2,111	8,957	9,143	8,356	3,927	4,394	4,920	5,420	6,911	7,428	7,290	6,970	6,617	6,654		-20%	35%
Information Technology	4,784	5,113	5,039	5,245	5,472	4,843	4,423	3,934	4,358	5,165	5,563	5,832	5,870	5,776	6,152	29%	12%	56%
Auditing	4,121	3,043	3,058	2,820	3,536	3,486	2,852	3,638	3,777	4,143	4,231	4,505	4,368	4,560	4,399	7%	24%	21%
Purchasing	2,541	1,885	1,899	1,799	2,438	1,680	1,170	1,196	1,238	1,287	1,276	1,340	1,283	1,205	1,168	-54%	-52%	-2%
S&T Manager (NEW)	-	165	165	257	314	291	483	480	623	2,561	3,062	3,209	3,293	3,401	3,560		1034%	642%
Property	255	308	282	322	571	530	481	451	475	501	483	449	402	389	384	51%	-33%	-15%
Unknown/Other	23,092	22,277	18,087	15,543	3,229	1,495	3,280	1,258	402	71	344	139	48	31	62			
<b>TOTAL</b>	<b>129,249</b>	<b>132,593</b>	<b>134,431</b>	<b>134,539</b>	<b>134,370</b>	<b>128,242</b>	<b>126,032</b>	<b>125,879</b>	<b>133,103</b>	<b>147,705</b>	<b>151,891</b>	<b>152,326</b>	<b>151,355</b>	<b>150,465</b>	<b>152,651</b>	<b>↑</b>	<b>↑</b>	<b>↑</b>
<b>TOTAL w/o Facilities Eng and S&amp;T Manager</b>	<b>129,249</b>	<b>130,317</b>	<b>125,309</b>	<b>125,139</b>	<b>125,700</b>	<b>124,024</b>	<b>121,155</b>	<b>120,479</b>	<b>127,060</b>	<b>138,233</b>	<b>141,401</b>	<b>141,827</b>	<b>141,092</b>	<b>140,447</b>	<b>142,437</b>	<b>10.2%</b>	<b>13.3%</b>	<b>18.2%</b>



# AWF DAWIA Certification by Component



## Certification Level "Meet/Exceed" Rates by Component AT&L (FY15Q2)



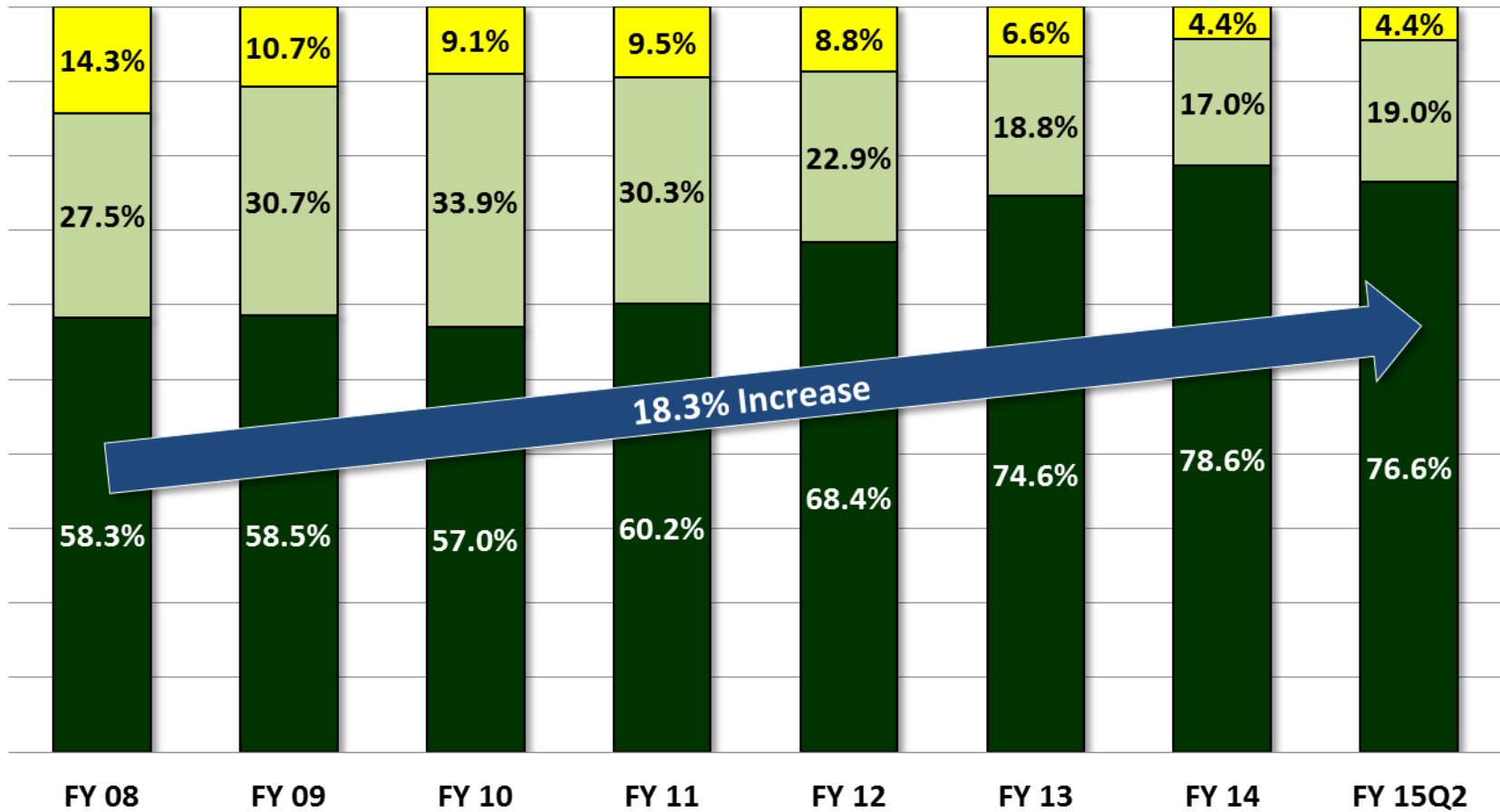




# AWF Historical DAWIA Certification FY08 – FY15Q2



## Overall



■ Meets/Exceeds    ■ 24 Month    ■ Does Not Meet

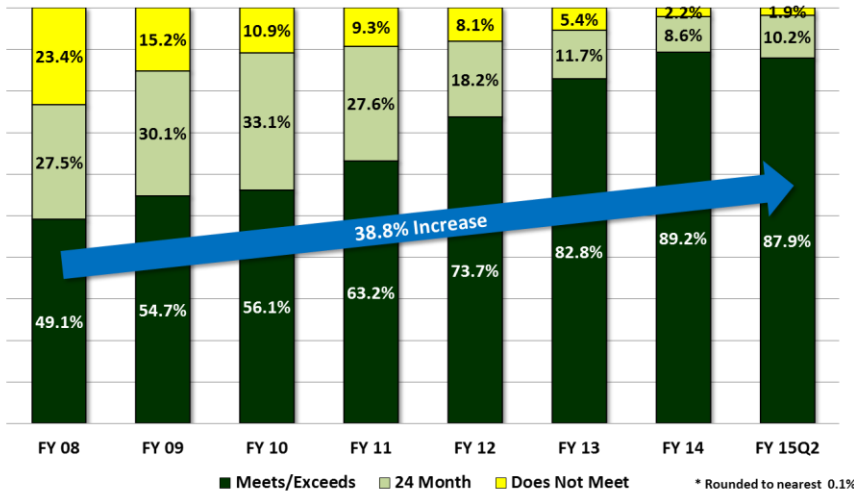
\* Rounded to nearest 0.1%



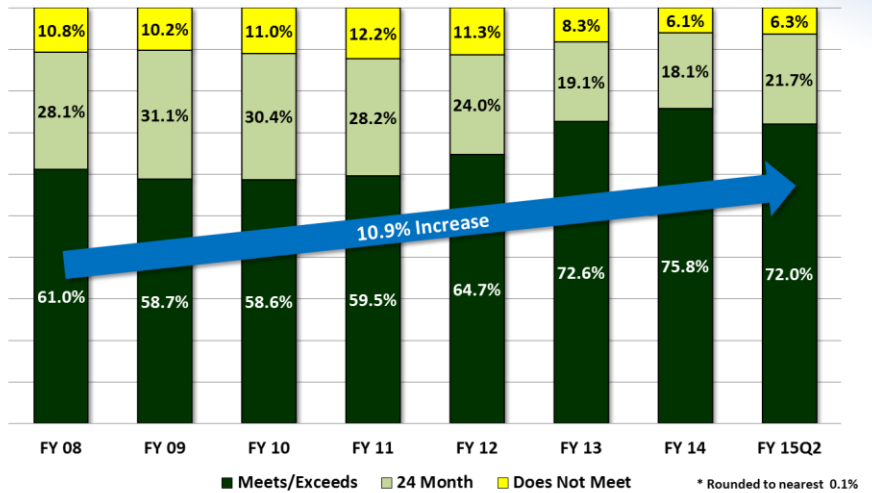
# AWF Historical DAWIA Certification by Component – FY08 – FY15Q2



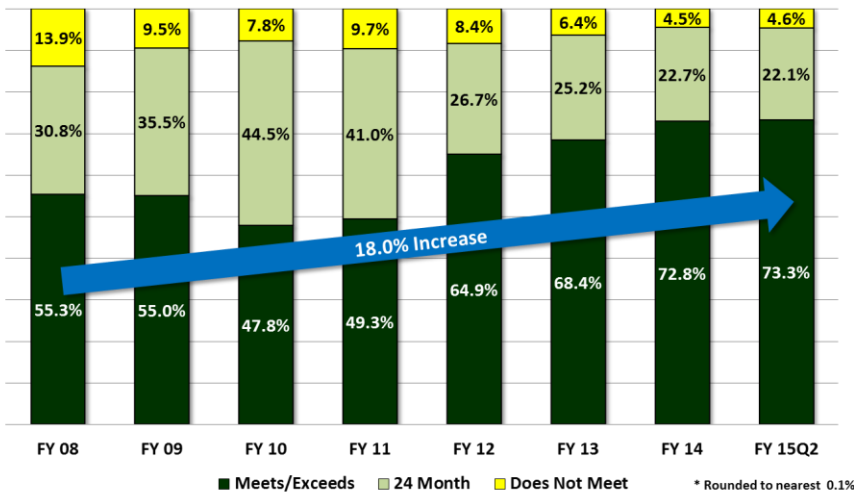
**ARMY**



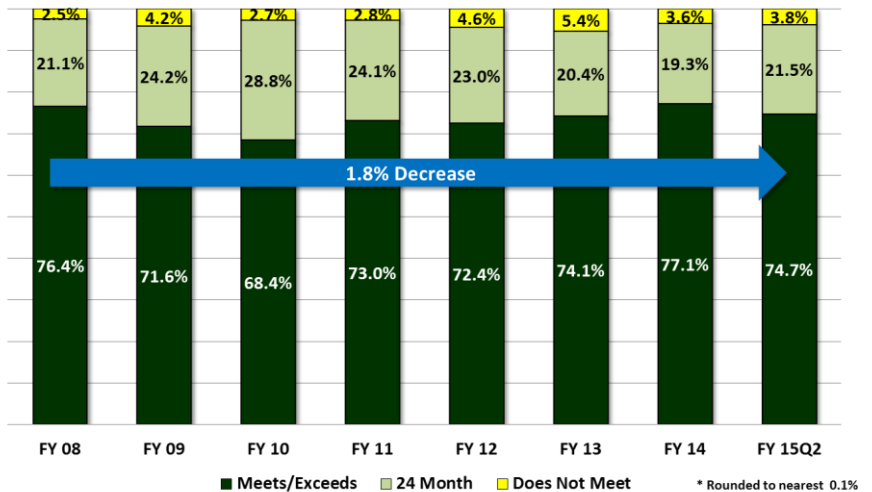
**DoN**



**AIR FORCE**



**4th Estate**

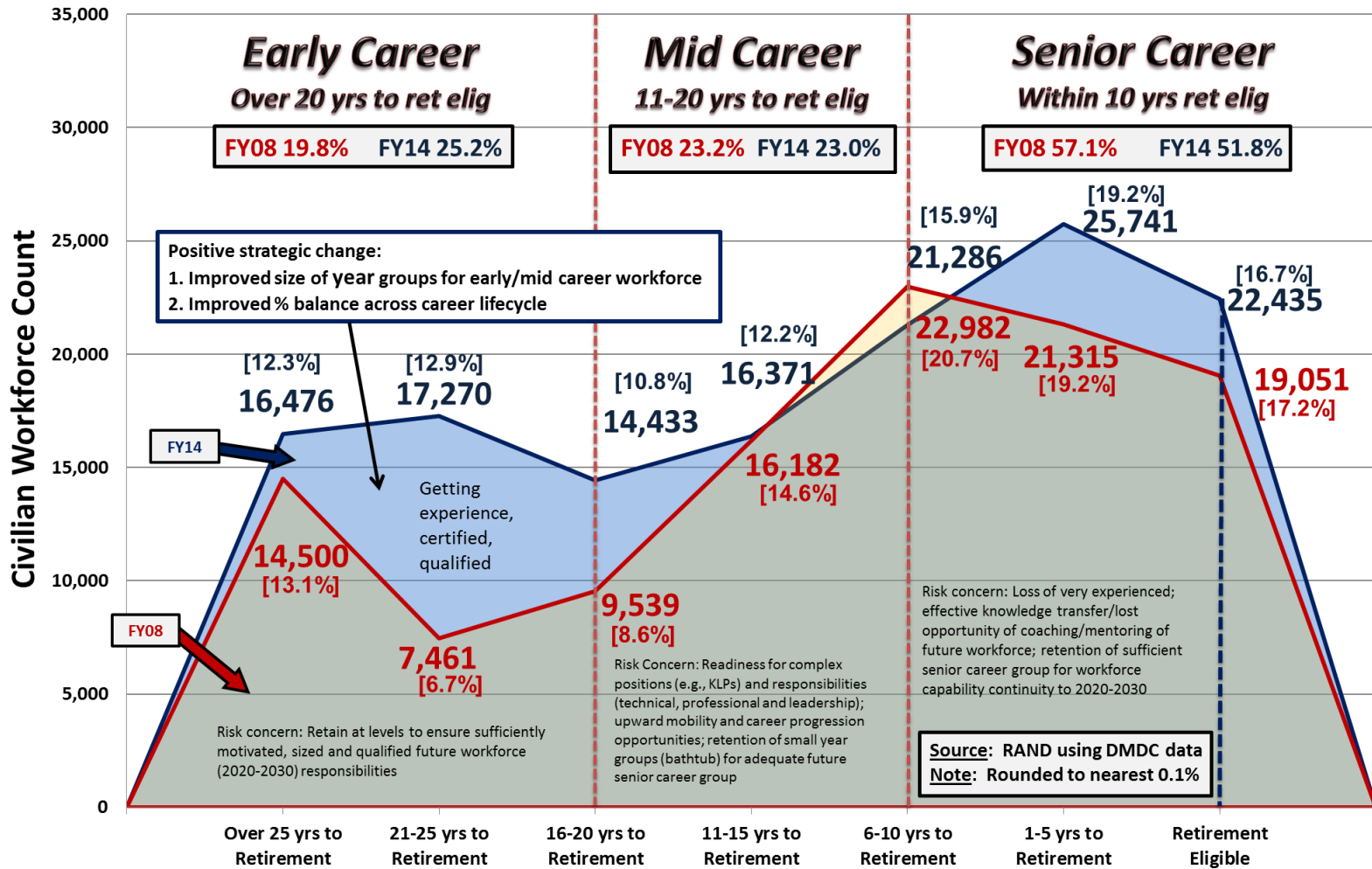




# AWF Retirement Eligibility Distribution Civilian Overall FY08 vs FY14

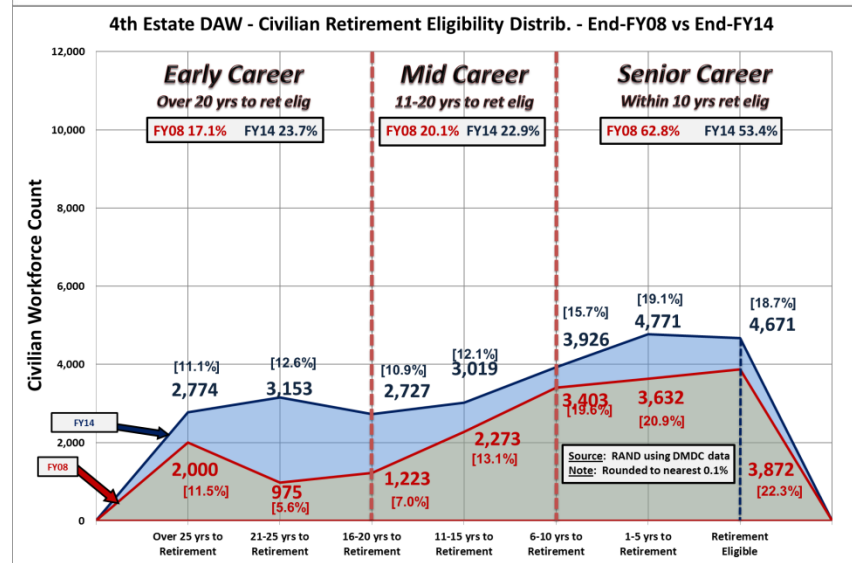
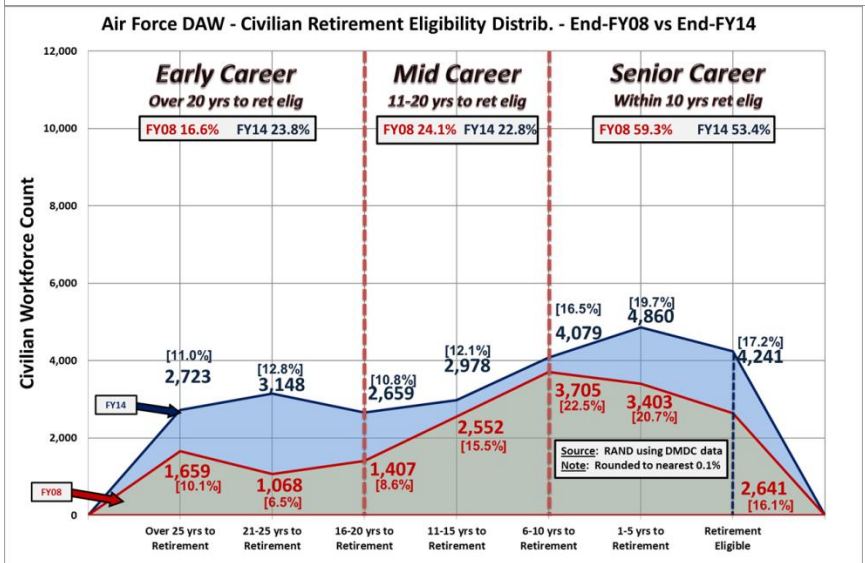
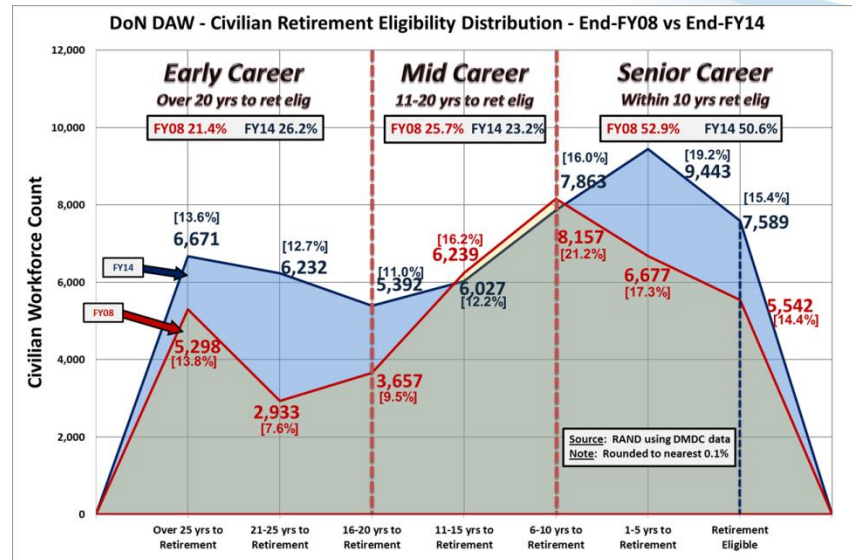
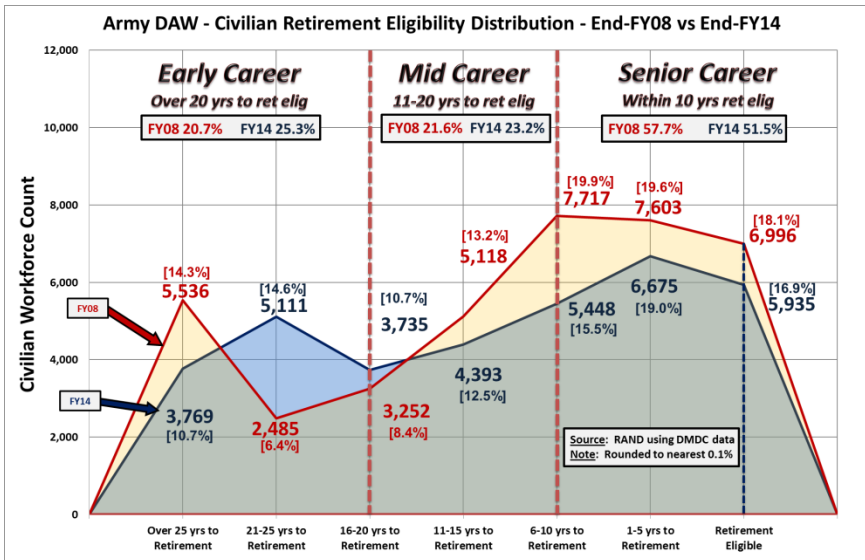


Overall DAW - Civilian Retirement Eligibility Distribution - End-FY08 vs End-FY14



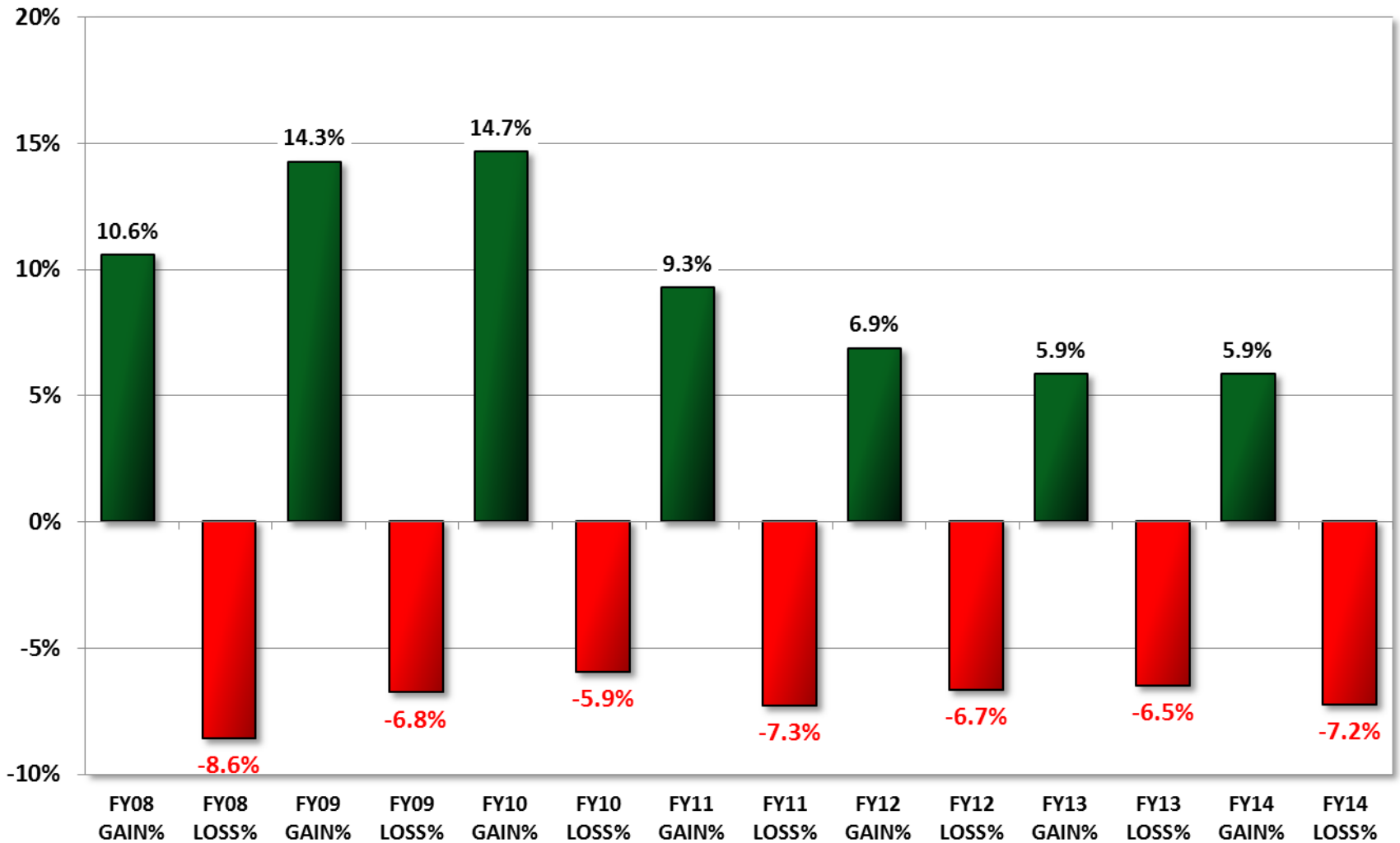


# AWF Retirement Eligibility Distribution Civilian by Component FY08 vs FY14





# AWF Historical Gains and Losses % Civilian Overall – FY08 – FY14

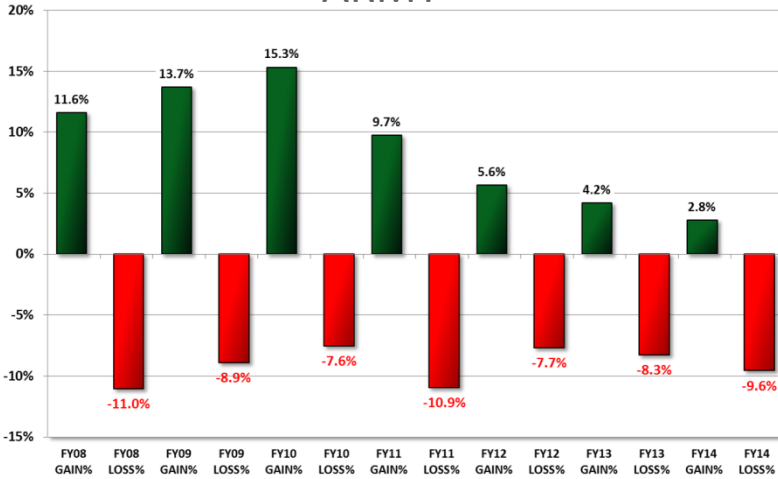




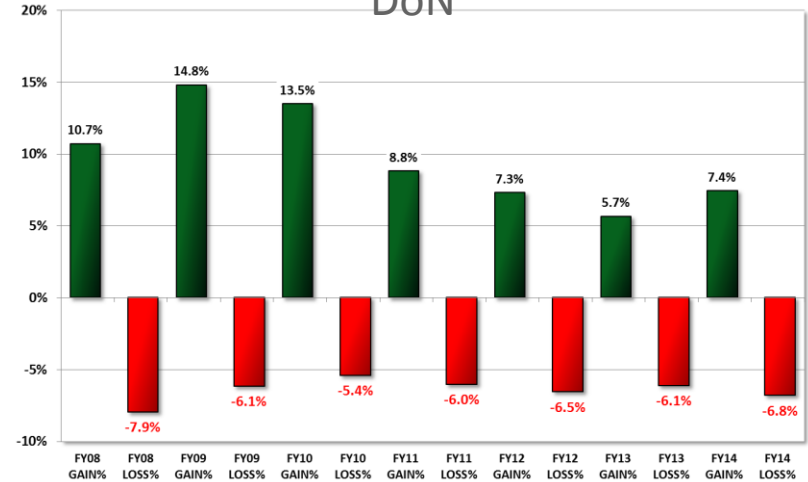
# AWF Historical Gains and Losses % Civilian by Component – FY08 – FY14



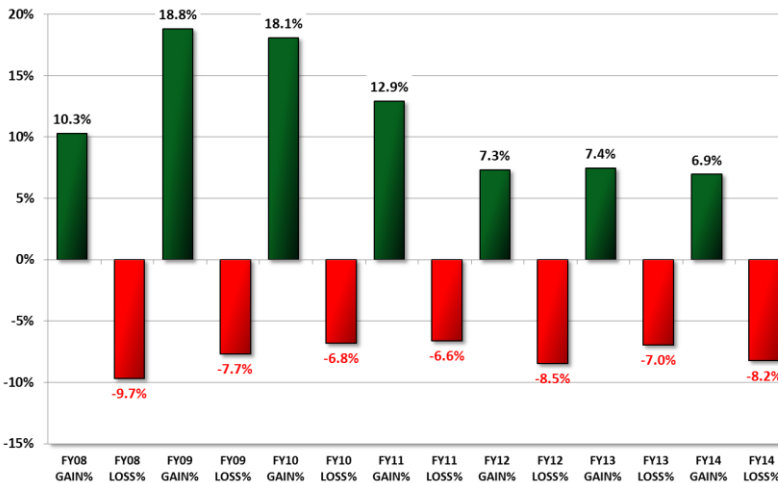
## ARMY



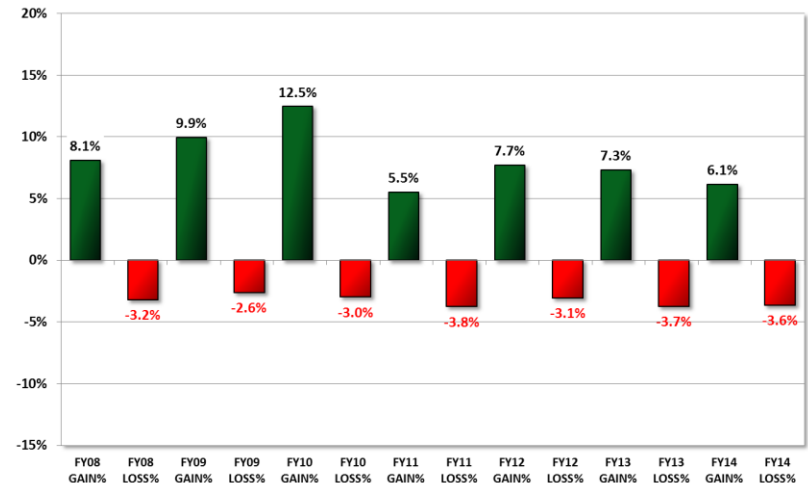
## DoN



## Air Force

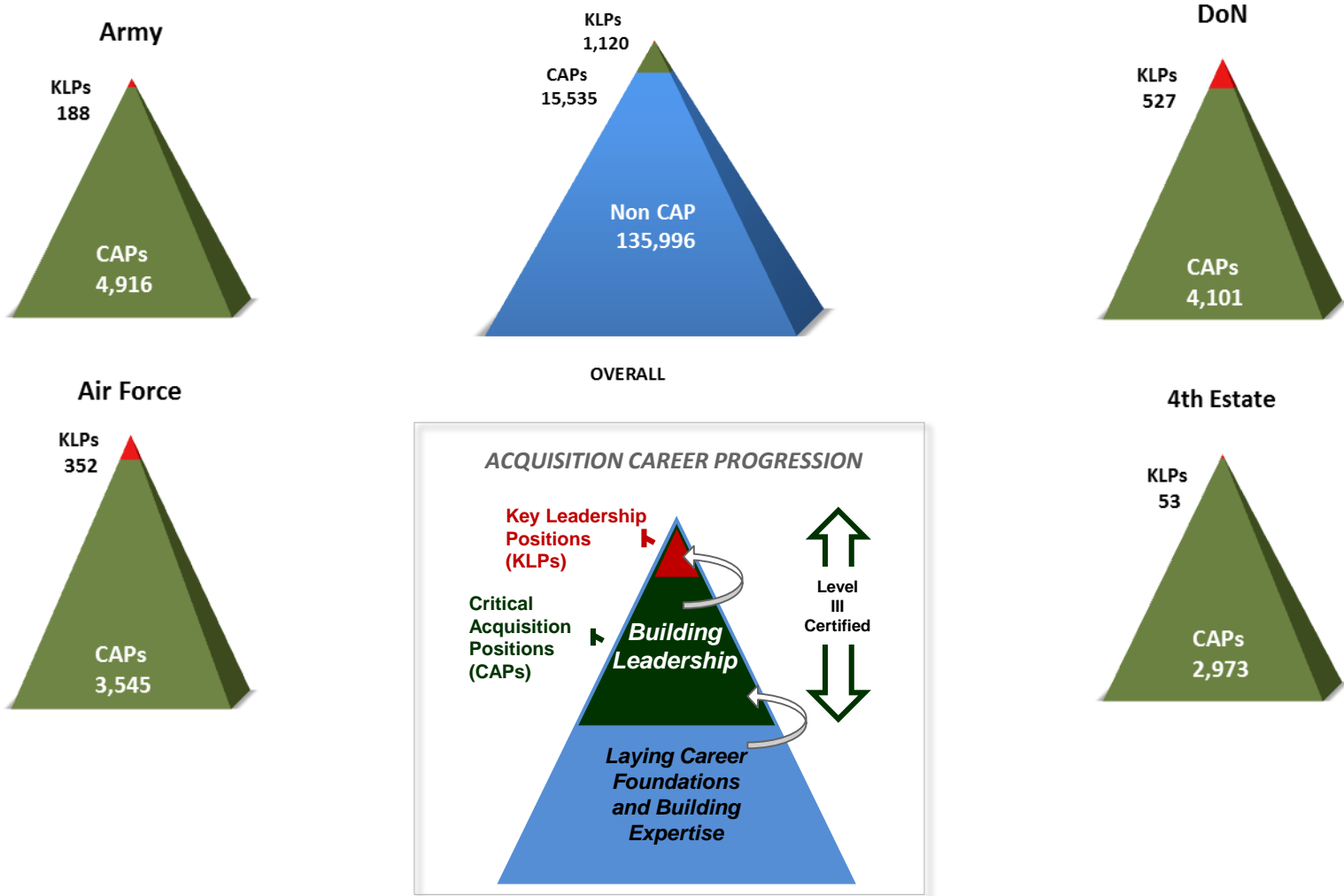


## 4<sup>th</sup> Estate





# AWF Critical Acquisition Position (CAP) and Key Leadership Position (KLP) by Component

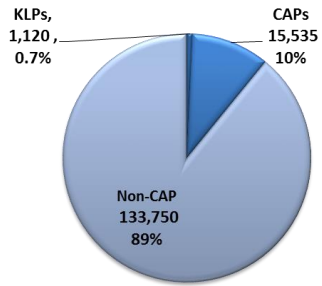




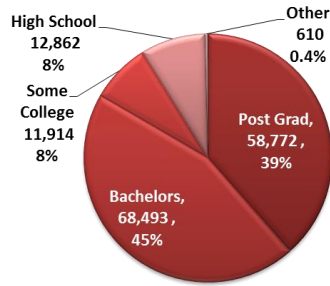
# AWF Demographics



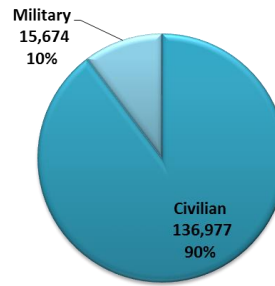
## CAP / KLP



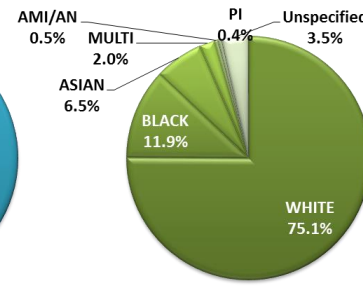
## Education



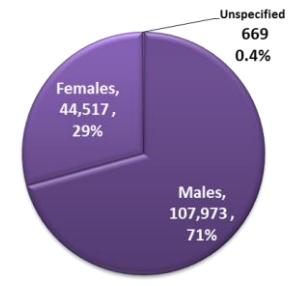
## Mil / Civ



## Race



## Gender



Occupied Position Type	Entire DAW	
Key Leadership Positions (KLPs)	1,120	0.7%
Critical Acquisition Positions (CAPs) *	15,535	10.2%
Non-CAP Positions	135,996	89.1%
<b>TOTAL</b>	<b>152,651</b>	

\* = Number of CAPs, excluding KLPs (no double counts)

Highest Level of Education	Entire DAW	
Post Grad	58,772	38.5%
Bachelors	68,493	44.9%
Some College	11,914	7.8%
High School	12,862	8.4%
Other	610	0.4%
<b>TOTAL</b>	<b>152,651</b>	

Military / Civilian	Entire DAW	
Civilian	136,977	89.7%
Military	15,674	10.3%
<b>TOTAL</b>	<b>152,651</b>	

Race	Entire DAW	
WHITE	114,642	75.1%
BLACK	18,203	11.9%
ASIAN	9,854	6.5%
MULTI	3,061	2.0%
AMI/AN	824	0.5%
PI	677	0.4%
Unspecified	5,390	3.5%
<b>TOTAL</b>	<b>152,651</b>	

Gender	Entire DAW	
Males	107,973	70.7%
Females	44,517	29.2%
<b>TOTAL</b>	<b>152,651</b>	





# AWF Overall Count Detail by Component and Career Field



Component	Service/Agency	Auditing	Business - Cost Estimating	Business - Financial Mgmt	Contracting	Engineering	Facilities Engineering	Industrial/Contract Property Mgt	Information Technology	Life Cycle Logistics	Production, Quality & Manuf.	Program Management	Purchasing	S&T Manager	Test and Evaluation	Unspecified	FY15 Q2 TOTAL
Army	Army Totals	-	245	1,659	8,093	8,899	1,559	48	1,703	7,361	1,404	3,305	235	369	2,014	11	36,905
DoN	Navy	-	527	1,749	5,217	19,793	4,977	59	2,335	5,422	2,623	5,336	407	453	3,073	3	51,974
	Marine Corps	-	32	189	515	379	37	-	233	461	32	832	58	3	120	-	2,891
	Dept of Navy Totals	-	559	1,938	5,732	20,172	5,014	59	2,568	5,883	2,655	6,168	465	456	3,193	3	54,865
Air Force	Air Force Totals	-	445	1,879	8,419	8,675	19	19	1,094	2,945	327	5,246	79	2,608	3,074	28	34,857
4th Estate	Defense Contract Management Agency	-	4	215	2,907	1,172	1	253	186	124	4,306	383	11	6	9	20	9,597
	Defense Logistics Agency	-	-	2	3,186	10	1	3	77	2,435	841	89	317	5	1	-	6,967
	Defense Contract Audit Agency	4,398	-	-	2	-	-	-	-	-	-	-	8	-	-	-	4,408
	Missile Defense Agency	-	55	232	198	588	39	-	51	73	51	349	1	2	266	-	1,905
	Defense Information Systems Agency	-	6	11	366	72	-	-	144	28	-	246	16	-	54	-	943
	Defense Threat Reduction Agency	-	-	74	73	45	1	-	46	3	-	134	2	109	7	-	494
	Defense Acquisition University	-	7	31	120	37	-	2	6	35	8	148	-	1	6	-	401
	DHA (TRICARE Management Activity & USUHS)	-	2	21	95	2	-	-	220	3	2	63	21	-	4	-	433
	Office of the Secretary of Defense & OSD Staff	-	1	11	36	25	-	-	-	14	1	76	-	1	7	-	172
	The Joint Staff	-	-	9	4	8	-	-	34	1	-	30	-	2	18	-	106
	Defense Commissary Agency	-	-	4	108	-	20	-	13	-	-	4	-	-	1	-	150
	Washington Headquarters Services	-	-	-	129	-	-	-	-	-	-	-	-	-	-	-	129
	DoD Education Activity	-	-	-	58	-	-	-	-	-	-	1	8	-	-	-	67
	Defense Finance and Accounting Service	-	-	-	63	-	-	-	-	-	-	1	-	-	-	-	64
	Defense Microelectronics Activity	-	-	4	24	19	-	-	6	-	-	-	-	-	-	-	53
	DoD Human Resources Activity	-	-	-	20	-	-	-	1	-	-	1	-	-	-	-	22
	Defense Security Cooperation Agency	-	-	1	14	-	-	-	-	-	-	3	1	-	-	-	19
	Defense Media Activity	-	-	-	14	-	-	-	-	-	-	-	2	-	-	-	16
	DoD Test Resource Management Center	-	-	4	-	1	-	-	-	-	-	1	-	-	18	-	24
	Defense Security Service	-	-	1	15	-	-	-	-	1	-	-	1	-	-	-	18
	Defense Advanced Research Projects Agency	-	-	-	11	-	-	-	-	-	-	-	-	-	-	-	11
	Defense Technical Information Center	-	-	-	-	-	-	-	3	-	-	12	-	-	-	-	15
	National Defense University	-	-	-	3	-	-	-	-	-	-	4	-	-	-	-	7
	DoD Inspector General	1	-	-	-	-	-	-	-	-	-	-	1	-	-	-	2
	ASD - Networks & Information Integration	-	-	-	-	-	-	-	-	-	-	-	-	1	-	-	1
	Pentagon Force Protection Agency	-	-	-	-	-	-	-	-	-	-	-	-	-	-	-	-
	4th Estate Totals	4,399	75	620	7,446	1,979	62	258	787	2,717	5,209	1,545	389	127	391	20	26,024
<b>TOTAL</b>		<b>4,399</b>	<b>1,324</b>	<b>6,096</b>	<b>29,690</b>	<b>39,725</b>	<b>6,654</b>	<b>384</b>	<b>6,152</b>	<b>18,906</b>	<b>9,595</b>	<b>16,264</b>	<b>1,168</b>	<b>3,560</b>	<b>8,672</b>	<b>62</b>	<b>152,651</b>



# AWF Count Detail – Change From FY14 by Component and Career Field



Component	Service/Agency	Auditing	Business - Cost Estimating	Business - Financial Mgmt	Contracting	Engineering	Facilities Engineering	Industrial/Contract Property Mgt	Information Technology	Life Cycle Logistics	Production, Quality & Manuf.	Program Management	Purchasing	S&T Manager	Test and Evaluation	Unspecified	FY15 Q2 TOTAL Increase / Decrease from end of FY14
Army	Army Totals	-	(5)	(107)	(118)	(82)	29	(1)	(1)	(193)	(28)	42	(30)	79	(23)	1	(437)
DoN	Navy	-	14	50	15	370	(21)	2	364	166	(15)	199	(35)	22	20	1	1,152
	Marine Corps	-	(3)	9	(8)	5	(4)	-	19	2	(5)	20	(1)	-	(6)	-	28
	Dept of Navy Totals	-	11	59	7	375	(25)	2	383	168	(20)	219	(36)	22	14	1	1,180
Air Force	Air Force Totals	-	7	29	6	202	15	(3)	(4)	38	(3)	4	(1)	49	99	24	462
4th Estate	Defense Contract Management Agency	(1)	2	(2)	(10)	15	1	(3)	(11)	(3)	(46)	(5)	4	-	6	5	(48)
	Defense Logistics Agency	-	(1)	(1)	(34)	(1)	-	-	34	1,163	26	1	28	(1)	-	-	1,214
	Defense Contract Audit Agency	(159)	-	-	-	-	-	-	-	-	-	-	-	-	-	-	(159)
	Missile Defense Agency	(1)	1	(7)	(2)	(17)	(3)	-	(2)	9	(3)	10	-	-	4	-	(11)
	Defense Information Systems Agency	-	2	(5)	1	(2)	-	-	4	(4)	-	4	1	-	1	-	2
	Defense Threat Reduction Agency	-	-	(5)	(4)	1	-	-	(8)	3	-	1	-	10	1	-	(1)
	Defense Acquisition University	-	(1)	-	(3)	(3)	-	-	-	(1)	(1)	9	-	-	(1)	-	(1)
	DHA (TRICARE Management Activity & USUHS)	-	(1)	(9)	6	(4)	-	-	(24)	-	(1)	(28)	(3)	-	-	-	(64)
	Office of the Secretary of Defense & OSD Staff	-	-	-	(3)	2	-	-	-	2	-	6	-	-	1	-	8
	The Joint Staff	-	-	1	-	(2)	-	-	-	-	-	(2)	-	-	-	-	(3)
	Defense Commissary Agency	-	-	1	-	-	20	-	2	-	-	(1)	-	-	-	-	22
	Washington Headquarters Services	-	-	-	6	-	-	-	-	-	-	-	-	-	-	-	6
	DoD Education Activity	-	-	-	7	-	-	-	-	-	-	1	1	-	-	-	9
	Defense Finance and Accounting Service	-	-	-	3	-	-	-	-	-	-	-	-	-	-	-	3
	Defense Microelectronics Activity	-	-	-	-	(1)	-	-	3	-	-	-	-	-	-	-	2
	DoD Human Resources Activity	-	-	-	(1)	-	-	-	-	-	-	-	(1)	-	-	-	(2)
	Defense Security Cooperation Agency	-	-	-	-	-	-	-	-	-	-	-	-	-	-	-	-
	Defense Media Activity	-	-	-	2	-	-	-	-	-	-	-	-	-	-	-	2
	DoD Test Resource Management Center	-	-	-	-	-	-	-	-	-	-	-	-	-	1	-	1
	Defense Security Service	-	-	-	1	-	-	-	-	-	-	-	-	-	-	-	1
	Defense Advanced Research Projects Agency	-	-	-	(1)	-	-	-	-	-	-	-	-	-	-	-	(1)
	Defense Technical Information Center	-	-	-	-	-	-	-	-	-	-	-	-	-	-	-	-
	National Defense University	-	-	-	1	-	-	-	-	-	-	-	-	-	-	-	1
	DoD Inspector General	-	-	-	-	-	-	-	-	-	-	-	-	-	-	-	-
	ASD - Networks & Information Integration	-	-	-	-	-	-	-	-	-	-	-	-	-	-	-	-
	Pentagon Force Protection Agency	-	-	-	-	-	-	-	-	-	-	-	-	-	-	-	-
	4th Estate Totals	(161)	2	(27)	(31)	(12)	18	(3)	(2)	1,169	(25)	(4)	30	9	13	5	981
TOTAL		(161)	15	(46)	(136)	483	37	(5)	376	1,182	(76)	261	(37)	159	103	31	2,186



# AWF Military Count Detail by Component and Career Field



Component	Service/Agency	Auditing	Business - Cost Estimating	Business - Financial Mgmt	Contracting	Engineering	Facilities Engineering	Industrial/Contract Property Mgt	Information Technology	Life Cycle Logistics	Production, Quality & Manuf.	Program Management	Purchasing	S&T Manager	Test and Evaluation	Unspecified	FY15 Q2 TOTAL
Army	Army Totals	-	-	-	1,121	3	-	-	-	-	-	919	-	-	28	-	2,071
DoN	Navy	-	4	88	1,015	203	-	-	17	399	579	907	-	34	403	3	3,652
	Marine Corps	-	-	5	178	14	-	-	15	163	31	389	-	3	53	-	851
	Dept of Navy Totals		4	93	1,193	217			32	562	610	1,296		37	456	3	4,503
Air Force	Air Force Totals	-	56	72	2,639	1,478	2	-	176	497	72	2,353	-	436	1,318	1	9,100
<b>TOTAL</b>		-	60	165	4,953	1,698	2	-	208	1,059	682	4,568	-	473	1,802	4	15,674



# AWF Civilian Count Detail by Component and Career Field



Component	Service/Agency	Auditing	Business - Cost Estimating	Business - Financial Mgmt	Contracting	Engineering	Facilities Engineering	Industrial/Contract Property Mgt	Information Technology	Life Cycle Logistics	Production, Quality & Manuf.	Program Management	Purchasing	S&T Manager	Test and Evaluation	Unspecified	FY15 Q2 TOTAL
Army	Army Totals	-	245	1,659	6,972	8,896	1,559	48	1,703	7,361	1,404	2,386	235	369	1,986	11	34,834
DoN	Navy	-	523	1,661	4,202	19,590	4,977	59	2,318	5,023	2,044	4,429	407	419	2,670	-	48,322
	Marine Corps	-	32	184	337	365	37	-	218	298	1	443	58	-	67	-	2,040
	Dept of Navy Totals	-	555	1,845	4,539	19,955	5,014	59	2,536	5,321	2,045	4,872	465	419	2,737	-	50,362
Air Force	Air Force Totals	-	389	1,807	5,780	7,197	17	19	918	2,448	255	2,893	79	2,172	1,756	27	25,757
4th Estate	Defense Contract Management Agency	-	4	215	2,907	1,172	1	253	186	124	4,306	383	11	6	9	20	9,597
	Defense Logistics Agency	-	-	2	3,186	10	1	3	77	2,435	841	89	317	5	1	-	6,967
	Defense Contract Audit Agency	4,398	-	-	2	-	-	-	-	-	-	-	8	-	-	-	4,408
	Missile Defense Agency	-	55	232	198	588	39	-	51	73	51	349	1	2	266	-	1,905
	Defense Information Systems Agency	-	6	11	366	72	-	-	144	28	-	246	16	-	54	-	943
	Defense Threat Reduction Agency	-	-	74	73	45	1	-	46	3	-	134	2	109	7	-	494
	Defense Acquisition University	-	7	31	120	37	-	2	6	35	8	148	-	1	6	-	401
	DHA (TRICARE Management Activity & USUHS)	-	2	21	95	2	-	-	220	3	2	63	21	-	4	-	433
	Office of the Secretary of Defense & OSD Staff	-	1	11	36	25	-	-	-	14	1	76	-	1	7	-	172
	The Joint Staff	-	-	9	4	8	-	-	34	1	-	30	-	2	18	-	106
	Defense Commissary Agency	-	-	4	108	-	20	-	13	-	-	4	-	-	1	-	150
	Washington Headquarters Services	-	-	-	129	-	-	-	-	-	-	-	-	-	-	-	129
	DoD Education Activity	-	-	-	58	-	-	-	-	-	-	1	8	-	-	-	67
	Defense Finance and Accounting Service	-	-	-	63	-	-	-	-	-	-	1	-	-	-	-	64
	Defense Microelectronics Activity	-	-	4	24	19	-	-	6	-	-	-	-	-	-	-	53
	DoD Human Resources Activity	-	-	-	20	-	-	-	1	-	-	1	-	-	-	-	22
	Defense Security Cooperation Agency	-	-	1	14	-	-	-	-	-	-	3	1	-	-	-	19
	Defense Media Activity	-	-	-	14	-	-	-	-	-	-	-	2	-	-	-	16
	DoD Test Resource Management Center	-	-	4	-	1	-	-	-	-	-	1	-	-	18	-	24
	Defense Security Service	-	-	1	15	-	-	-	-	1	-	-	1	-	-	-	18
	Defense Advanced Research Projects Agency	-	-	-	11	-	-	-	-	-	-	-	-	-	-	-	11
	Defense Technical Information Center	-	-	-	-	-	-	-	3	-	-	12	-	-	-	-	15
	National Defense University	-	-	-	3	-	-	-	-	-	-	4	-	-	-	-	7
	DoD Inspector General	1	-	-	-	-	-	-	-	-	-	-	1	-	-	-	2
	ASD - Networks & Information Integration	-	-	-	-	-	-	-	-	-	-	-	-	1	-	-	1
	Pentagon Force Protection Agency	-	-	-	-	-	-	-	-	-	-	-	-	-	-	-	-
	4th Estate Totals	4,399	75	620	7,446	1,979	62	258	787	2,717	5,209	1,545	389	127	391	20	26,024
<b>TOTAL</b>		<b>4,399</b>	<b>1,264</b>	<b>5,931</b>	<b>24,737</b>	<b>38,027</b>	<b>6,652</b>	<b>384</b>	<b>5,944</b>	<b>17,847</b>	<b>8,913</b>	<b>11,696</b>	<b>1,168</b>	<b>3,087</b>	<b>6,870</b>	<b>58</b>	<b>136,977</b>



# AWF KLP Count Detail by Component and Career Field



KLPs	Service/Agency	Auditing	Business - Cost Estimating	Business - Financial Mgmt	Contracting	Engineering	Facilities Engineering	Industrial/Contract Property Mgt	Information Technology	Life Cycle Logistics	Production, Quality & Manuf.	Program Management	Purchasing	S&T Manager	Test and Evaluation	Unspecified	FY15Q2 TOTAL
Army	Army Totals	-	8	16	12	27	-	-	1	15	5	97	-	-	7	-	188
Navy	Navy	-	36	61	54	63	1	-	4	46	11	158	-	-	44	-	478
	Marine Corps	-	4	5	7	5	-	-	-	3	-	23	-	-	2	-	49
	Dept of Navy Totals	-	40	66	61	68	1	-	4	49	11	181	-	-	46	-	527
Air Force	Air Force Totals	-	2	33	53	56	-	-	2	28	-	154	-	8	16	-	352
4th Estate	Defense Contract Management Agency	-	-	-	1	1	-	-	-	-	-	2	-	-	-	-	4
	Defense Logistics Agency	-	-	-	8	-	-	-	-	5	-	2	-	-	-	-	15
	Missile Defense Agency	-	1	-	1	4	-	-	-	1	-	8	-	-	-	-	15
	Defense Information Systems Agency	-	-	-	1	-	-	-	-	-	-	3	-	-	3	-	7
	Defense Threat Reduction Agency	-	-	-	1	-	-	-	-	-	-	1	-	-	-	-	2
	DHA (TRICARE Management Activity & USUHS)	-	-	1	1	1	-	-	1	-	-	3	-	-	-	-	7
	DoD Human Resources Activity	-	-	-	1	-	-	-	-	-	-	-	-	-	-	-	1
	Defense Security Cooperation Agency	-	-	-	-	-	-	-	-	-	-	1	-	-	-	-	1
	ASD - Networks & Information Integration	-	-	-	-	-	-	-	-	-	-	-	-	1	-	-	1
	4th Estate Totals	-	1	1	14	6	-	-	1	6	-	20	-	1	3	-	53
TOTAL		-	51	116	140	157	1	-	8	98	16	452	-	9	72	-	1,120